



Tacoma Power Squadron



The Wake Astern

December 2016
Monthly Newsletter Vol. 77 No. 12





COMMANDER



Cdr Lance Williamson, P

Ho Ho Ho! Almost Merry Christmas! It will be a Merry Christmas, but Christmas is still a few shopping days away. Since *Prequel* came into our family, my wife and I have given the boat our main Christmas present. It appears as though *Prequel* will be receiving a new set of Volvo Penta

duo props for Christmas. I am also building a new table for the galley. Now I really know why B.O.A.T. stands for “bring on another thousand.”

Speaking of Christmas, have you heard that USPS members of District 16 qualify for a discount at Fisheries Supply? Registering is easy. The discount is for online and in-store purchases. Click on the following link to find out about and sign up for the Fisheries Supply discount:

<http://www.uspsd16sg.org/index.php/2016-02-05-00-37-43/2016-02-05-19-07-13/2016-05-10-17-03-58>

The Tacoma Power Squadron’s annual Christmas Brunch will be held on December 4th at the Tacoma Yacht Club. The festivities will go from 12:30 pm – 3:00 pm. Santa is planning on making an appearance. I am planning on having some friends from our church’s worship team come and lead us in singing some Christmas songs and carols. Please be aware that the parking lot for the Tacoma Yacht Club is under construction. Signs (or construction staff) will direct you to where to park. Check out the Christmas Brunch registration in this publication.

The new AED has arrived!! This is great news! The January

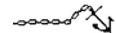
2017 General Meeting of the squadron will have a program on how to operate the AED. Please attend that meeting; after all, a person’s life could depend on it.

The Tacoma Power Squadron tied for first place in having the most people attend the recent D16 Fall Conference. Way to go TPS!!

The Tacoma Yacht Club will be having their Lighted Boat Parade on December 17th. There are several places along the waterfront to view the parade. We have arranged to be moored along the parade route. I had better get my special LED Christmas lights out that we use on *Prequel*.

The main boating time of the year has passed but please do not forget boat maintenance. When was the last time that zincs were changed? Oil changed? Battery water level checked and topped off? Water lines winterized? You get the picture.

The nominating committee will soon begin their work to fill positions on the bridge, board and various committees. It seems as though a person named “Vacant” is serving in many capacities with our squadron. “Vacant” is feeling overworked and underappreciated. “Vacant” would like to retire from some of those positions. The persons who seems to be on everyone’s list to nominate for one of our squadron openings is “Someone Else.” The “Else” family is very popular in many organizations in the area. “Someone” seems to be the most popular member of the family; closely followed by “No one.” “Someone Else” has already agreed to a secret job in our squadron so you CANNOT nominate “Someone Else” to fill a position! YOU are needed to fill a position in our squadron. Please say “Yes!” if the nominating committee gives you call. The Tacoma Power Squadron needs YOU!!



**Call to Meeting
Holiday Brunch
(in place of General Meeting)
December 4th, 2016 (1230 - 1500)
at the Tacoma Yatch Club

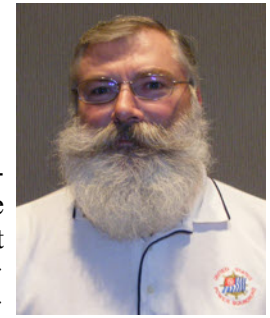
Executive Board Meeting
December 13, 2016 (1900 - 2100)
Orchard Park Rehab Center
4755 So. 48th, Tacoma**

Contents

XO Rpt-----	Page 3
SEO Rpt-----	Page 4
Battery Overview-----	Page 5
Environmental Rpt-----	Page 6/7
RBAW/Special Peoples’ Cruise-----	Page 8
Christmas Brunch Registration-----	Page 9
TPS 2017 Rendv Schedule/San Juan Cruise-----	Page 10



EXECUTIVE DEPARTMENT



Lt/C Larry Warren, AP

BRIDGE OFFICERS

- Commander
Cdr Lance Williamson, P
(253) 312-1371
- Executive Officer
Lt/C Larry Warren, AP
(360) 897-8692
- Administrative Officer
Vacant
- Educational Officers
Lt/C Otto Rasmussen, SN, CN
(253) 537-3838
Lt/C Sandi Carroll, SN
(360) 683-7577
- Secretary
Lt/C Francie Hope, AP
(253) 761-1276
- Treasurer
Lt/C Jon Everett, AP
(253) 661-2857

EXECUTIVE BOARD

- P/C Jackie Mattox, AP
- Lt Richard Mattox, AP
- Lt Ben Dahle, AP
- Lt Jim Jackson
- Lt Karen Jackson
- Lt Cindy Warren, AP
- P/Lt/C Stan Wolfe, AP-CN

BOATING ACTIVITIES CHAIRMAN

Lt Becky Arrington, S
253-564-4011 Home
253-381-6226 Cell
beckyarrington@cbbain.com

Co-Chm Lt Cindy Warren, AP
360-897-8692 Home
l.m.warren-1@hotmail.com

The Wake Astern

Editor: Lt Richard Mattox, AP
(253) 581-1732
ricque0602@comcast.net

SHIPS STORE

P/C Tim Craig, P, Stores
Linda Craig, S, Clothing
(253) 536-1222
tlc861@comcast.net

TPS WEBSITE

www.tacomapowerandsailsquadron.org

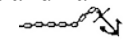
D/16 WEBSITE

www.uspsd16.org

By the time you read this, we will have a new President-elect and been stuffed at Thanksgiving as well. We have had the fall Council/Conference and are heading straight for a Christmas Holiday. Things go fast when you get older, or maybe it's, Time flies when you're having fun. Well, whoever coined the phrases, wasn't kidding one bit. Ok, so the election thing wasn't all that fun, and it seemed like slow motion, but as with a lot of stuff in life you just can't avoid them painful or not.

The Council/Conference was a great weekend in Bellingham. The Bellingham Sail & Power Squadron did a fantastic job with the arrangements and details of the Council/Conference. The hotel was great, and it was a breath of fresh air to be able to hear the speakers at the meetings with the hotel's new sound system. We won't go into the Saturday morning breakfast incident. Our very own D/C Christine Rasmussen, SN kept the agenda of the conference moving right along, not letting the speakers just go on and on. There is far too much to cover in this article but here are a few highlights. The guest speakers, Dan Shipman from the USCG (boating program), Craig Brown, USC-GAUX, and the Cdr of Poverty Bay Power Squadron, and Derek Van Dyke of the Washington State Parks & Recreation were all entertaining and informative speakers and well worth the time to listen to their messages. We heard a video presentation from our Chief Commander Louie Ojeda, SN. Heard reports from all Squadron Commanders except North Star (Alaska) Squadron on what each squadron is doing to retain their members. Adopted a 2017- 2018 budget, set a time and place for the Spring Council/Conference (March 10th, 11th & 12th at Lk. Chelan's Campbell's Resort). Set a time and location for the Incoming Officers meeting (Held in Bellevue in conjunction with the Education seminar on April 29th,2017) more to come later. We had many awards presented, and the District nominating committee met and filled the slate of District Officers and Chairpersons for the 2017- 2018 operating year. The Conference wouldn't have been complete without the Saturday evening Banquet and Awards. And there was no disappointment as the meal was excellent, the awards went quickly, and the entertainment was terrific. All in all, we must have been having fun as the evening went by far too fast.

Up next is our Christmas Brunch, happening on the fourth of December 2016 at TYC, 12:30 – 3:00 PM. Please don't forget to sign up, looks like we're in for a treat with Cdr Lance Williamson and a band to entertain us all. I've heard thru the grapevine that Santa will stop by for young and old alike. Sign up early, bring Friends and Family, we'll have fun, good food, and comradery. I'll see you there.

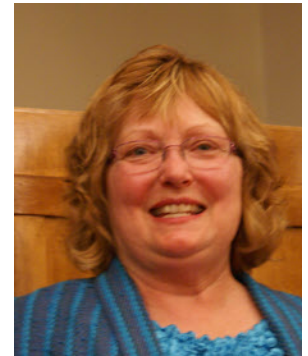


Come for the Boating Education...Stay for the FriendsSM



*Lt/C Otto Rasmussen, SN, CN
Education Officer*

EDUCATIONAL DEPARTMENT



*Lt/C Sandi Carroll, SN
Education Officer*

Hi to all from your co - SEO's Sandi & Otto.

The ABC Basic Boating Class exam was held on November 2nd at Totem Yacht Club. All students passed and most are planning to take the Seamanship Class starting January 11th 2017. This will be held at Totem Yacht Club as well. If you, a family member, or friend would be interested in the Seamanship Class, please contact Otto or Sandi. We need lead time to get materials on hand for the class.

We are hopeful to do an Engine Maintenance Class after the first of the year. Our problem is our regular Engine Maintenance Class instructor is unable to do a class at this time due to personal commitments, which are taking his voluntary hours to the max.

If anyone out there would be willing to do the Engine Maintenance Class for the Squadron, please contact Otto or Sandi. We can discuss the situation. There are members willing to assist with this.

I am trying to co-ordinate a Piloting Class next February. What we need is someone willing to instruct the first few sessions of the class, until our regular instructor returns from Arizona to finish the remaining class sessions. If you might be interested in helping on this, please let us know and we could work out some plans.

Our National Headquarters will be making a \$20.00 exam charge to anyone who is not a Power Squadron member and wishes to do an exam at the completion of a course. This fee is for National to maintain records of these exams for the nonmember. In the event that they join USPS they will receive full credit for all courses completed.

It was announced at the District 16 Fall Conference in Bellingham, WA that the 2017 District 16 Spring Conference would be at Campbell's Resort on Lake Chelan in Eastern Washington. It sounds like they are putting together a neat program. Details will be forthcoming from the Seattle Sail and Power Squadron. Check it out in the District 16 newsletter, "Cardinal Points" when it's published.

We trust this brings us up to date for now. Look for developments on the Tacoma Power Squadron Web Site, or the next "Wake Astern".

Cheers, Otto & Sandi

Email- Otto- otto@rasmussen.mailhost.org (253)-537-3838

Email- Sandi- mitch-sandi@worldnet.att.net 1(360)-683-7577

Email- Brenda W. - williamson.bren@gmail.com (253)-370-3048



Lead Acid Battery Overview

The lead acid battery was invented in 1859 by a French physicist, Gaston Plante. It has with stood the test of time. Today it is still the most common source of direct current (DC) aboard recreational vessels.

Construction

One cell consists of two plates, one lead, and one lead oxide immersed in a solution of 35% sulfuric acid and 65% water called an electrolyte, this is a fully charged cell. Each cell produces 2.1 volts (V) of DC. Internally six cells are connected together in series to produce 12.6 V at the battery terminals.

Discharge

When being discharged the output voltage is reduced, the sulfuric acid concentration is reduced, and sulfate is deposited on the plates.

ex. A 50% charge reduction equals 12.2 V output.

Charge

A battery can be recharged using the boats engines via the alternator and voltage regulator, or an alternating current (AC) battery charger connected to shore power. In both instances the charging voltage must be greater than the rated battery output voltage nominally 14 V for a 12 V battery. During the charging process the sulfate is recombined into the electrolyte and the percentage of sulfuric acid concentration is restored along with the output voltage.

Corrosion

Always be on the lookout for corrosion and deal with immediately. Mix some baking soda and water (2 Tbsp per cup). Apply the mixture to the corrosion, it will fizz and bubble, rinse the area off with fresh water. After it dries inspect and repair the damage, spray area with a corrosion preventative. Do not allow any of the baking soda solution to enter the battery. Keep all of the caps on.

Note: Corrosion problems will usually show up as slow engine cranking due to restricted current flow, mimicking a weak battery.

Safety

The charging process also causes hydrogen and oxygen to be discharged. A concentration of hydrogen greater than 4% is combustible (explosive).

- * Store and operate batteries in well ventilated spaces
- * Always wear eye protection when working on batteries, sulfuric acid can blind you
- * No open flames or sparks near a charging battery
- * Never short a battery to test it
- * Use a battery terminal puller to remove all terminals, Twisting them off can break the terminal to battery seal, or possibly short the battery
- * When removing a battery, disconnect the ground terminal (-) first, then the hot side (+) terminal
- * When installing a battery, connect the hot terminal (+) first, then the ground (-)
- * Use a battery filler when adding water to batteries, it will top off your cells with the exact amount with no electrolyte spillage
- * Use distilled water to replace lost electrolyte, not purified water

Tools

Battery post and terminal cleaner (wire brush), Multi Meter, Spray can of corrosion preventative, Battery terminal puller, Auto shutoff battery water filler, Baking soda, Distilled water

The above is only scratching the surface of subject marine batteries. For more information consult USPS course Marine Electrical Systems (MES). For complete in depth information on battery maintenance safety go to the Occupational Safety and Health Administration web site (www.osha.gov).

Prepared by: P/C Andy Temple AP



Environmental Report

Provided by Lt/C Larry Warren, AP

Washington's climate is changing. Over the past century, most of the state has warmed one to two degrees (F). Glaciers are retreating, the snowpack is melting earlier in the year, and the flow of meltwater into streams during summer is declining. In the coming decades, coastal waters will become more acidic, streams will be warmer, populations of several fish species will decline, and wildfires may be more common.

Our climate is changing because the Earth is warming. People have increased the amount of carbon dioxide in the air by 40 percent since the late 1700s. Other heat-trapping greenhouse gases are also increasing. These gases have warmed the surface and lower atmosphere of our planet about one degree during the last 50 years. Evaporation increases as the atmosphere warms, which increases humidity, average rainfall, and the frequency of heavy rainstorms in many places—but contributes to drought in others.

Greenhouse gases are also changing the world's oceans and ice cover. Carbon dioxide reacts with water to form carbonic acid, so the oceans are becoming more acidic. The surface of the ocean has warmed about one degree during the last 80 years. Warming is causing snow to melt earlier in spring, and mountain glaciers are retreating. Even the great ice sheets on Greenland and Antarctica are shrinking. Thus the sea is rising at an increasing rate.

Impacts of Sea Level Rise

Sea level rise will threaten coastal development and ecosystems. Erosion will threaten homes and public property along the shore. Increased flooding could threaten wastewater treatment plants, ferry terminals, highways, and railroads along Puget Sound. Mudflats, marshes, and other tidal wetlands provide habitat for birds and fish. As water levels rise, wetlands may be submerged or squeezed between the rising sea and structures built to protect coastal development.

Marine and Coastal Ecosystems

Washington's coastal waters are vulnerable to acidification. The ocean here is more acidic than most of the ocean, because nearby currents bring relatively acidic water from the deep ocean to the surface, especially during spring and summer. Increasing acidity impairs the ability of some types of shellfish to capture minerals in the water to build their shells, which can lead to thinner shells—or even prevent shells from forming. Oyster hatcheries in Washington are becoming less productive, because the water they draw from along the shore has become more acidic and corrosive, partly because of higher atmospheric carbon dioxide. Acidity also thins the exoskeletons of many species of plankton, which could reduce the population of those plankton and the fish that feed on them and alter the entire marine food web. For example, young salmon eat some of the types of shellfish and plankton that are vulnerable to acidification.

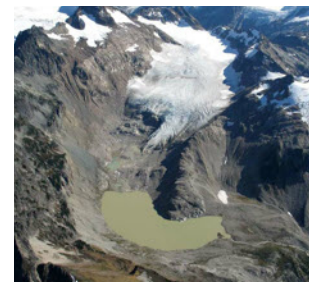
Rising ocean temperatures may also harm marine ecosystems. Warming waters can increase the frequency of toxic algae blooms (such as “red tide”) that cause shellfish poisoning and lead to closures of beaches and shellfish beds. Warmer waters also allow invasive species from southern waters to move northward.

Glacial Retreat

Three thousand glaciers cover about 170 square miles of mountains in Washington, but that area is decreasing in response to warmer temperatures. For example, South Cascade Glacier has decreased in size since the 1950s, with an accelerated rate of decline in recent years.



September 1955



September 2004

(Environmental Report continued on Page 7)



(Environmental Report continued from Page 6)

Snowpack, Streamflows, and Water Availability

The flows of water in rivers and streams are increasing during late winter and early spring but decreasing during summer. Warmer winters have reduced average snowpack in Washington by 20 percent since 1950. The snowpack is now melting a few weeks earlier than during the 20th century, and, by 2050, it is likely to melt three to four weeks earlier. Decreasing snowpack means there will be less water flowing through streams during summer. Moreover, rising temperatures increase the rate at which water evaporates (or transpires) into the air from soils and plants. More evaporation means that less water will drain from the ground into rivers and streams.

Declining snow and streamflow would harm some economic sectors and aquatic ecosystems. Less snow means a shorter season for skiing and other winter recreation. Water temperatures will rise, which would hurt Chinook and sockeye salmon in the interior Columbia River Basin. The combination of warmer water and lower flows would threaten salmon, steelhead, and trout. Lower flows would also mean less hydroelectric power.

Drought and Wildfires

Changing the climate is likely to more than double the area in the Northwest burned by forest fires during an average year by the end of the 21st century. Although drier soils increase the risk of wildfire, other factors also contribute to fires, and forests in the Western Cascades may be less vulnerable to climate change than those in the Eastern Cascades. Higher temperatures and a lack of water can also make trees more susceptible to pests and disease, and trees damaged or killed burn more readily than living trees. Changing climate is likely to increase the area of pine forests in the Northwest infested with mountain pine beetles over the next few decades. Pine beetles and wildfires are each likely to decrease harvests. Increasing wildfires also threaten homes and pollute the air.

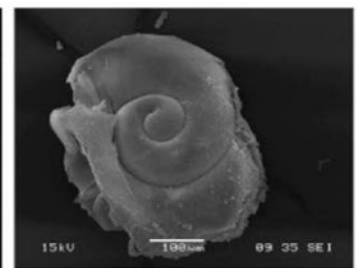
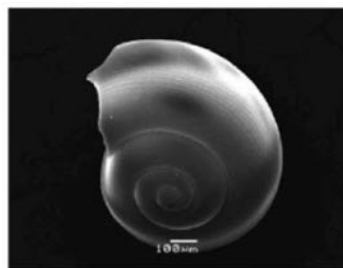
Agriculture

The changing climate will affect Washington’s agricultural sector, particularly fruits and vegetables, which often require irrigation. Because streams rather than ground water provide most of Washington’s irrigation water, the expected decline in streamflow would reduce the water available for irrigation. About two-thirds of the nation’s apples come from Washington, and most are grown east of the Cascade Mountains where the dry climate requires irrigation. The Washington Department of Ecology is concerned that yields of apples and cherries may decline in the Yakima River Basin as water becomes less available. Alfalfa, potato, and wheat farmers also require substantial irrigation.

Health and Vulnerable People

Climate change is likely to amplify some threats to health in Washington. Certain people are especially vulnerable, including children, the elderly, the sick, and the poor.

The sources of information about climate and the impacts of climate change in this publication are: the national climate assessments by the U.S. Global Change Research Program, assessment reports by the Intergovernmental Panel on Climate Change, and EPA’s Climate Change Indicators in the United States. Mention of a particular season, location, species, or any other aspect of an impact does not imply anything about the likelihood or importance of aspects that are not mentioned. For more information about climate change science, impacts, responses, and what you can do, visit EPA’s Climate Change website at www.epa.gov/climatechange.





United States Power Squadrons®

RBAW
RECREATIONAL BOATING ASSOCIATION OF WASHINGTON



PC Chuck Gay, Delegate/Director
253-318-2905 cell cdgii@aol.com

Puget Sound No Discharge Zone (NDZ) We are now in a wait-and-see-mode with regard to the appeals files with the Pollution Control Hearings Board (PCHB) to both place a “stay” on the NDZ petition filed by the State Dept. of Ecology (DOE), and for the PCHB to hear the Marine Alliance case against the lack of science behind the NDZ. We’re particularly disappointed with the provisions of the DOE motion to dismiss that disputes DOE’s obligation to develop a sound scientific foundation for the NDZ designation.

Washington Dept. of Fish & Wildlife (WDFW) is proposing legislation that would serve their main goal of robust funding of an Aquatic Invasive Species (AIS) enforcement and education program. WDFW has in its legislation package a provision to impose a fee on smaller, non-motor-powered vessels such as kayaks, paddle boards and dinghies. RBAW has requested a full exemption to that fee for all registered boaters who may have such watercraft, but are already paying into the system through their annual vessel registration. Other proposals for fees which have been looked at include per vessel vs. per person or a set number of vessels per registration.

RBAW will be holding the Annual Membership meeting at Gig Harbor Yacht Club on Saturday, November 19th, beginning at 0900. All RBAW individual members are welcome to attend.

Washington State Parks has submitted to the Governor’s Office and the Office of Financial Management (OFM) its proposal for several Agency-request bills that would be offered in 2017 if approved. RBAW has voted to support legislation that would allow law enforcement to impound vessels manned by impaired operators – as a last resort. Also supported are bills that would update boater education cards and exempt flare guns used by boaters from part of the state’s “gun control” statutes.

Big tent Outdoor Recreation Coalition is working on a short list of items that will include efforts to protect dedicated capital funding and to ensure that tourism legislation puts a strong focus on outdoor recreation spending. The annual “Big Tent Rally” will be held on February 15th.

Past Commodore Chuck Gay, RBAW Director and Delegate

Special Peoples’ Cruise

P/C Jackie Mattox, AP

The “Holiday Cruise for People with Disabilities” has been an annual event for forty years. It is sponsored by the Parks Department, Tacoma Yacht Club, Day Island Yacht Club, Fircrest Yacht Club and Totem Yacht Club. This year the Power Squadron has been asked if we could help with docking. The date is Dec 3 from 1000 to 1500.

We need more docking help. As people are assigned to a boat for a short cruise, they are escorted to the docks and an assigned boat. As docking help, you would be helping host boats to tie up at the dock for boarding and debarking.

These people are truly grateful for the opportunity to go for a boat ride. Last year there were about 200 special people plus escorts who went for a boat ride.

If you would be available to help, please contact me. This is a good opportunity for the Power Squadron to participate in a community event.

Jackie Mattox
253 732 2264





Annual Christmas Brunch

Please join us for Tacoma Power Squadron’s annual Christmas Brunch held at the Tacoma Yacht Club. Enjoy good food, friends and the winter views of Puget Sound from the warmth of Tacoma Yacht Club’s Ballroom. Santa will be joining us so bring your children or grandchildren and your cameras.

Sunday 4 December 2016 @ 1230
Tacoma Yacht Club – 5401 North Waterfront Drive

\$21.50 per person – Children 10 and under \$10.50

We ask that you bring an unwrapped gift for a girl or boy ages 3-18. Gifts will be donated to “Bridges” A center for grieving children.

Menu:

Assorted muffins, pastries and petite croissants – Seasonal fruit display – Bacon and link sausage – Hash brown potatoes – Scrambled eggs with cheese – Waffles with fruit toppings and whipped cream – Chilled juices – Coffee and herbal tea

Please return form to:
Cdr Lance Williamson
P.O. Box 291
Graham, WA 98338

Deadline for reservations is 28 November 2016



Christmas Brunch 4 December 2016
Please make checks payable to Tacoma Power Squadron

Name: _____ Phone: _____

Number of adults: _____ Number of children 10 and under: _____

Names of children who wish to see Santa _____

Total amount enclosed: \$ _____





Tacoma Power Squadron 2017 Rendezvous Schedule

January 28	Copperline Cruise In	Jackie & Richard Mattox Cindy & Larry Warren
February 24 - 26	Gig Harbor Net Shed reserved 253-851-1793	Stan & Debbie Wolfe 253-948-6101 Call Marina to reserve (8 boats)
March 24 - 26	Dock Street 253-272-4352	Need Hosts Call Marina to reserve (8 boats)
April 6 - 9 Club	TYC Daffodill	Reserve on line at Tacoma Yacht
June 22 - 25	Poulsbo	Registration form/Wake Astern

Any Marina with a phone # means you must call the marina and the host or fleet captain to reserve for the weekend. Please call host if attending a rendezvous for planning purposes. Please consider hosting a rendezvous or helping to host.

Cindy Warren 360-897-8692 c.m.warren-7@hotmail.com

Becky Arrington 253-381-6226 beckyarrington@cbbain.com


Summer 2017 San Juan Islands Cruise

Cdr Lance Williamson, P

The planning process for the summer 2017 San Juan Islands Cruise has begun! A tentative schedule has been developed.

<u>Location</u>	<u>Nights of...</u>
Rendezvous (destination TBD)	July 28, 29
Oak Harbor	July 30
Deer Harbor (Orcas Island)	July 31, August 1, 2
Fisherman Bay (Lopez Island)	August 3, 4, 5
Roche Harbor (San Juan Island)	August 6, 7, 8
Rosario Resort (East Sound Orcas Island)	August 9, 10, 11

People are invited to attend the entire trip or any part of the trip. People are also free to take side trips. Additional information will be made available as the planning progresses.



L.A.W. Enterprises
Lance Warren

**REFRIGERATION
METAL FABRICATION
WELDING
BRAZING**

Give us a call, even
if your boat is small.

cell 1-360-821-2096
home 1-360-385-7689

Port Townsend, Wa



**DAVE'S
DIVE SERVICES, LLC**

- Zincs / Hull Maintenance
- Props: Replace/Rebuild/Resize
- Salvage / Dock Refloat
- Contract Marine Services

253.222.4645

Dave Dye
"Divemaster Dave"

Licensed General Contractor
Lic # DAVESDS894R9

COMPLETE Parts & Service - Marine Hardware
Specializing In Outboards & Stern Drives



Lighthouse Marine, Inc.
www.lighthousemarineinc.net

Authorized Dealers
MERCURY • YAMAHA • EVINRUDE • JOHNSON
MERCUISER • OMC • COBRA • VOLVO

Rich Swanson
Mike Averill
Owners

253 858-7280

3720 Harborview Dr.
Gig Harbor, WA 98332



MICHAEL MARCHETTI
Owner

MOORAGE • YACHT SALES • SERVICE

5603 N. Waterfront Drive Tacoma, WA 98407
(253) 752-6663 CELL (253) 381-2173 FAX (253) 752-8291
michael@breakwatermarina.com

(253) 565-6060
Fax (253) 627-7006

3001 Marine View Dr.
Tacoma, WA 98422




BOAT TOP SHOP
253-565-6060
"On the dock or in the shop"

www.boattopshop.com
Jeff Prigge

For all your canvas and upholstery needs

Darrin Swindahl



**modutech
marine**

2218 Marine View Dr. • Tacoma, WA 98422 • (253) 272-9319
Fax: (253) 272-9337 • darrin@modutechmarine.com

The Wake Astern is the official monthly publication of the Tacoma Power Squadron, PO Box 45121, Tacoma, WA 98448-0121. Articles, opinions and advertisements expressed herein do not necessarily reflect policies of The Tacoma Power Squadron or United States Power Squadrons® unless so designated. The editor reserves the right to edit and modify materials submitted for publication and to publish such materials in a style which best serves the needs of USPS, TPS and **The Wake Astern**.



December 2016



Sunday	Monday	Tuesday	Wednesday	Thursday	Friday	Saturday
				1	2	3
4 Christmas Brunch at TYC	5	6	7	8	9	10
11	12 Deadline Wake Astern	13 1900 - 2100 * Ex. Bd Mtg	14	15	16	17
18	19	20	21	22	23	24
25 	26	27 No Gen Mtg this Month	28	29	30	31

* Orchard Park Rehab Center
4755 So. 48th, Tacoma, WA 98409

* Orchard Park Rehab Center
4755 So. 48th, Tacoma, WA 98409



January 2017



Sunday	Monday	Tuesday	Wednesday	Thursday	Friday	Saturday
1	2	3	4	5	6	7
8	9	10 1900-2100 * Ex. Bd Mtg Orchard Park Rehab Center	11 Seamanship Cls @ Totem YC	12 Deadline Wake Astern	13	14
15	16	17	18 Seamanship Cls @ Totem YC	19	20	21
22	23	24 1830 - 2030 Gen. Mtg At DIYC	25 Seamanship Cls @ Totem YC	26	27	28 Copperline Cruise-In 1300 - 2100
29	30	31	Seamanship Cls @ Totem YC			

TACOMA POWER SQUADRON
P.O. BOX 45121
TACOMA WA 98448-0121



ADDRESS SERVICE REQUESTED

DECEMBER 2016

Merry 
Christmas 


The Wake Astern